

WiFi Carbon Monoxide detector



*Please read this manual carefully before use and keep it for future reference.

Product Specifications

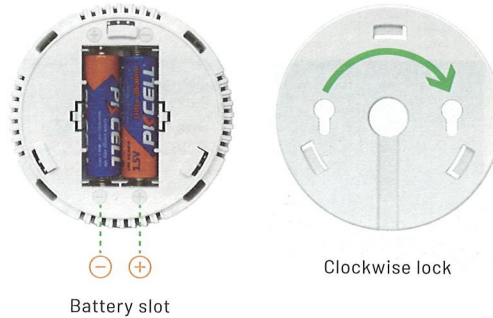
Input Voltage:	DC3V LR6-AA*2
Static Current:	≤55uA
Alarm Current:	≤160mA
Low Voltage:	≤2.4V
Wi-Fi:	802.11b/g/n
Detectable Gas:	Carbon Monoxide (CO)
Alarm set value:	128ppm (±50ppm)
Alarm Sound:	≥70dB/1M
Alarm Mode:	Sound and flash Alarm
Installation Method:	Wall Mounting
Working Temperature:	-10°C to 55°C
Working Humidity:	Up to 95% RH

Note:

Do not use in environments with humidity exceeding 90% for prolonged periods.

2

Introduction:



- Green light: Status light
- Yellow light: Fault light
- Blue light: WiFi light

3

Functional Description:

① All indicator lights briefly turn on and then turn off when power on. The green indicator light flashes every second, the screen shows a 120-second countdown. the flashing stops after 120 seconds,

4

then the screen shows "0 ppm." The green indicator light flashes once every 40 seconds.

② When there is malfunction with CO sensor, the orange indicator light flashes twice every 40 seconds, the buzzer beeps twice, and the screen shows "ERR."

③ When press the test button the green and yellow lights keep turn on, the red light to blink, and the buzzer to sound a beep.

④ When the CO concentration in the environment exceeds the set value (128ppm), the red indicator light blinks, and a continuous beeping sound until the screen shows "0 ppm" then stop alarm (APP receives alarm message if network connected success)

⑤ For user testing, you can lit a cigarette and let smoke into the product. After a moment, the screen will show the CO concentration value. If it exceeds the set value, an alarm will sound, and the red indicator light will flash simultaneously.

5

How to use:

1. Download "SmartLife" by APP store or scan below QR code.

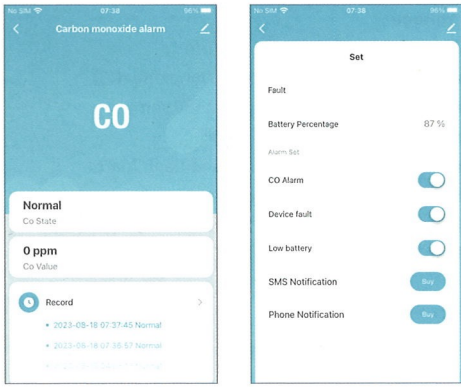


Android/iOS

2. Register by mobile phone or email.

6

6. After configuration success, click the icon of CO detector to check alarm status and detection value (when concentration over 128ppm APP shows value, wait for 2 minutes to quit alarm then shows 0ppm)

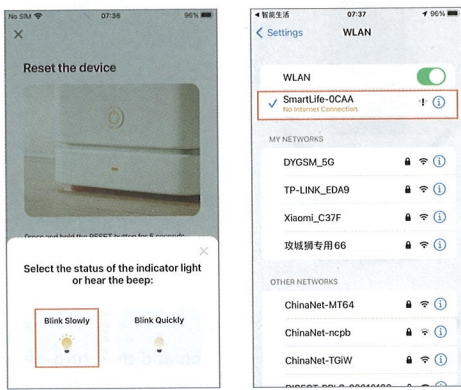


13

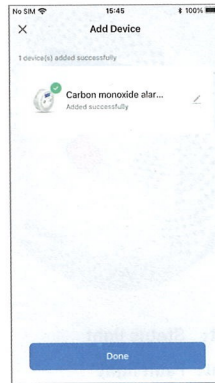
7. It reports to APP automatically when there is malfunction with CO sensor, the orange indicator light flashes twice every 40 seconds, the buzzer beeps twice, and the screen shows "ERR."



14

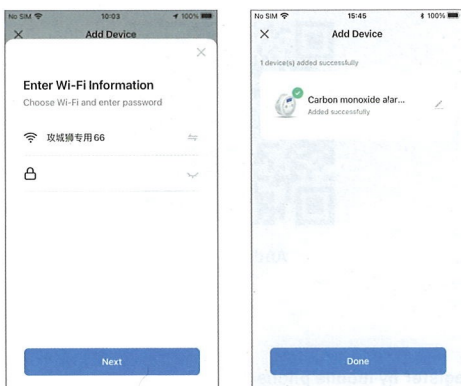


11

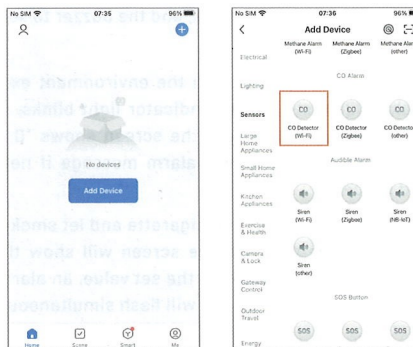


12

5. Manual configuration, when blue light of device blinks quickly, press Reset key for 5 seconds till the blue light blinks slowly, click "+" in top of right or "Add device" in middle blank by APP home page, choose "sensors" → "CO alarm(WiFi)→ indicator light blinking slowly → input WiFi password(support 2.4G WiFi only, not 5G) → choose "Smartlife_XXXX" from WiFi list → return to App and manual configuration success.



9



10

3. Press Reset key of device for more than 5 seconds till the blue light blinks quickly, click "+" in top of right or "Add device" in middle blank by APP home page, choose "sensors" → "CO alarm(WiFi)" → indicator light blinking quickly → input WiFi password (support 2.4G WiFi only, not 5G) → Automatic configuration success.



4. Bluetooth configuration follow below steps.

